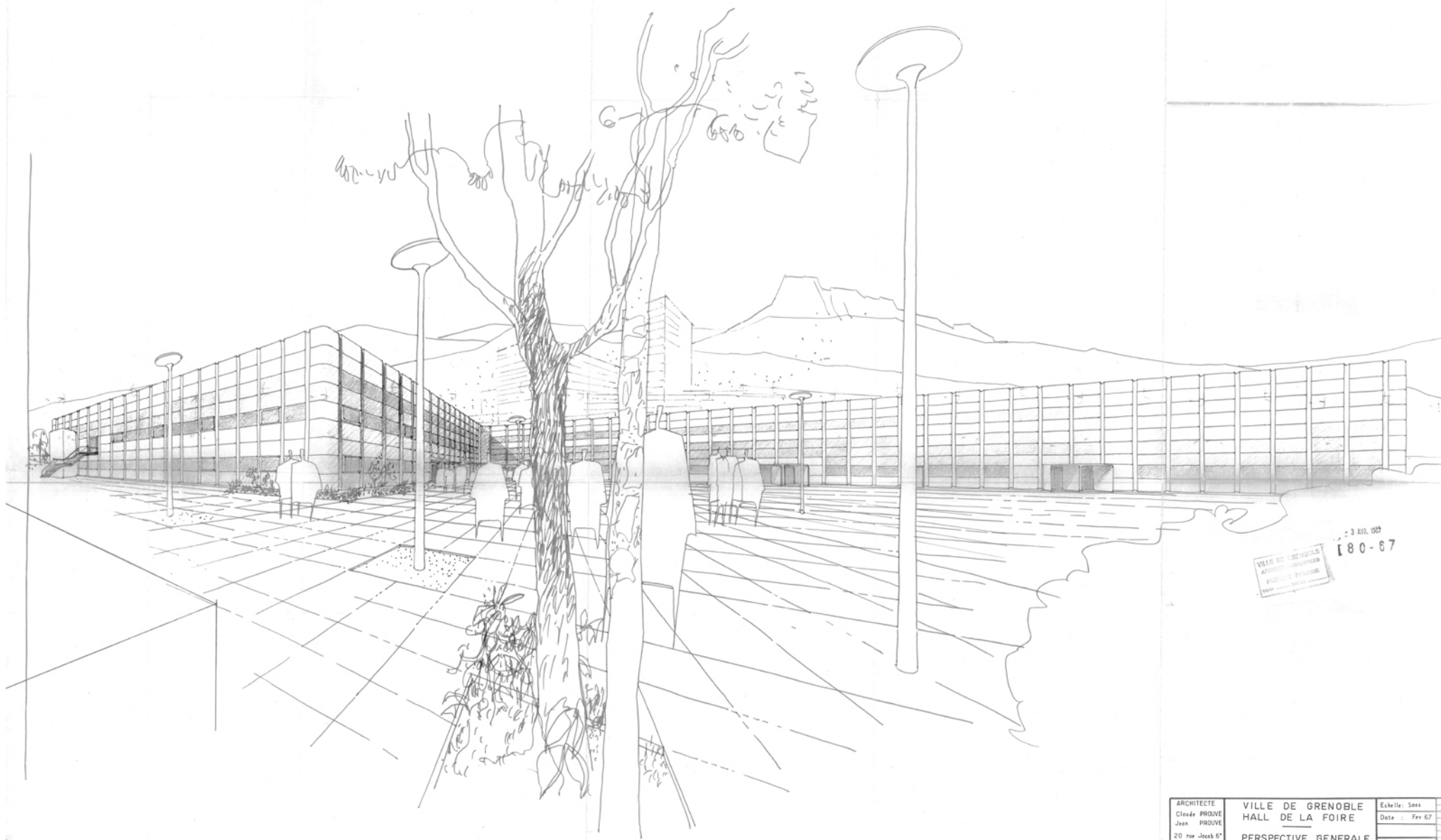




PATRIMOINE DU XX^e SIECLE

ALPEXPO/Jean Prouvé - Grenoble

**PATRIARCHE
&CO**



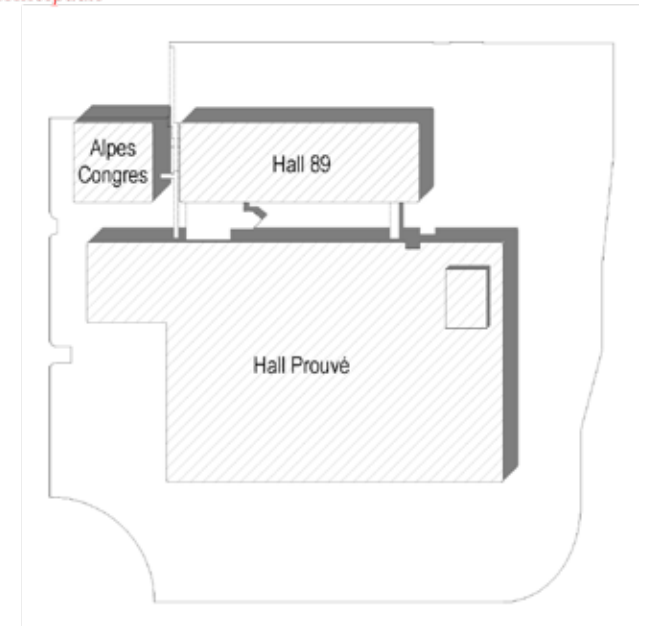
23 AVR. 1967
 VILLE DE GRENOBLE
 ARCHITECTES ASSOCIES
 PIERRE PROUVE
 180-67

ARCHITECTE	VILLE DE GRENOBLE	Echelle: Sans
Claude PROUVE	HALL DE LA FOIRE	Date : Fev 67
Jean PROUVE	PERSPECTIVE GENERALE	A 1001
20 rue Jacob 67		
Tel. 038 6836		



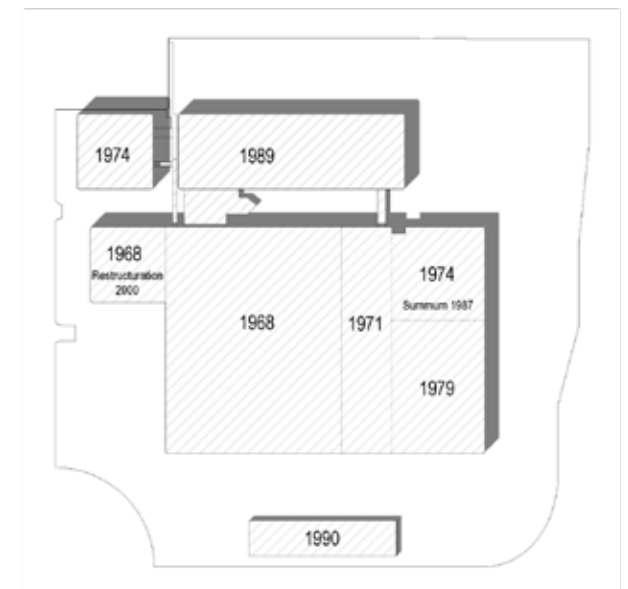
Présentation des différents bâtiments

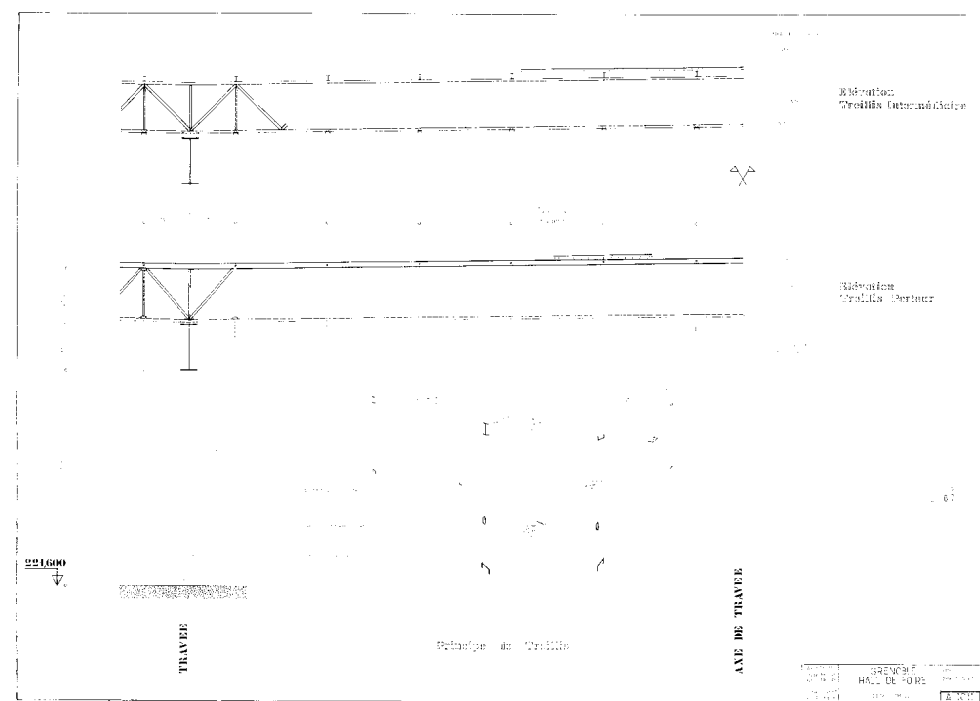
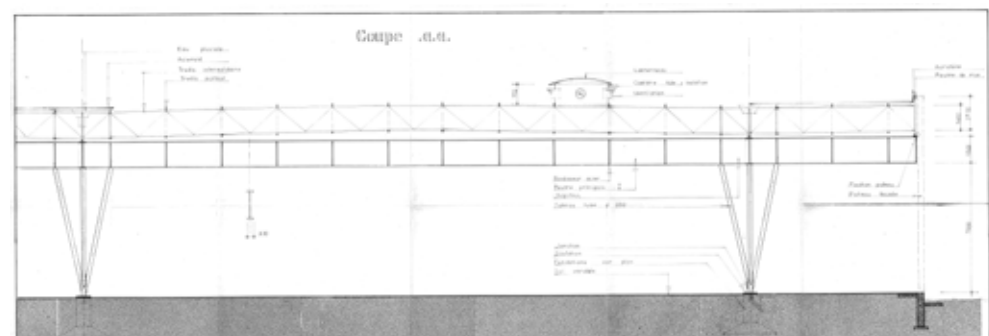
Trois bâtiments principaux

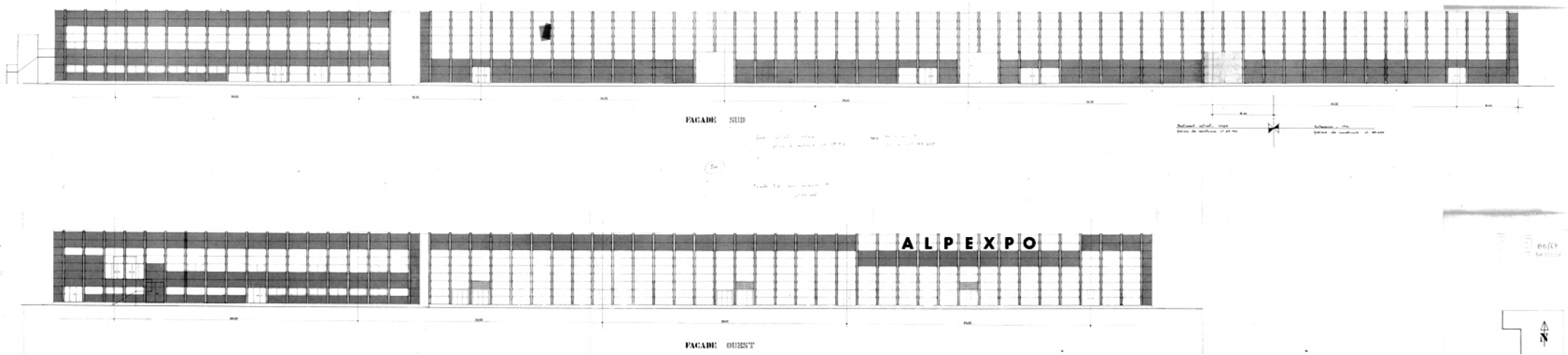


Chronologie

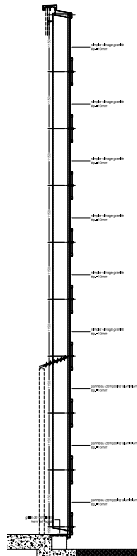
Différentes phases de construction



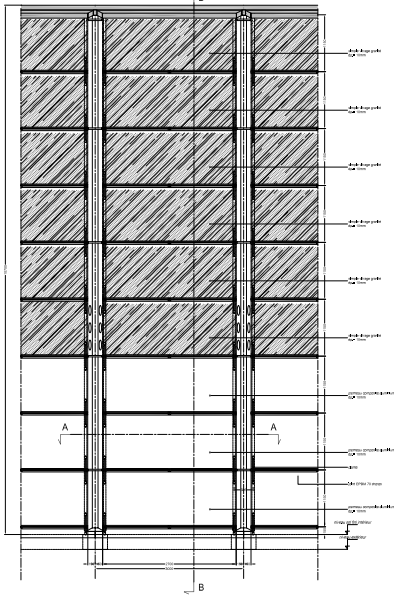




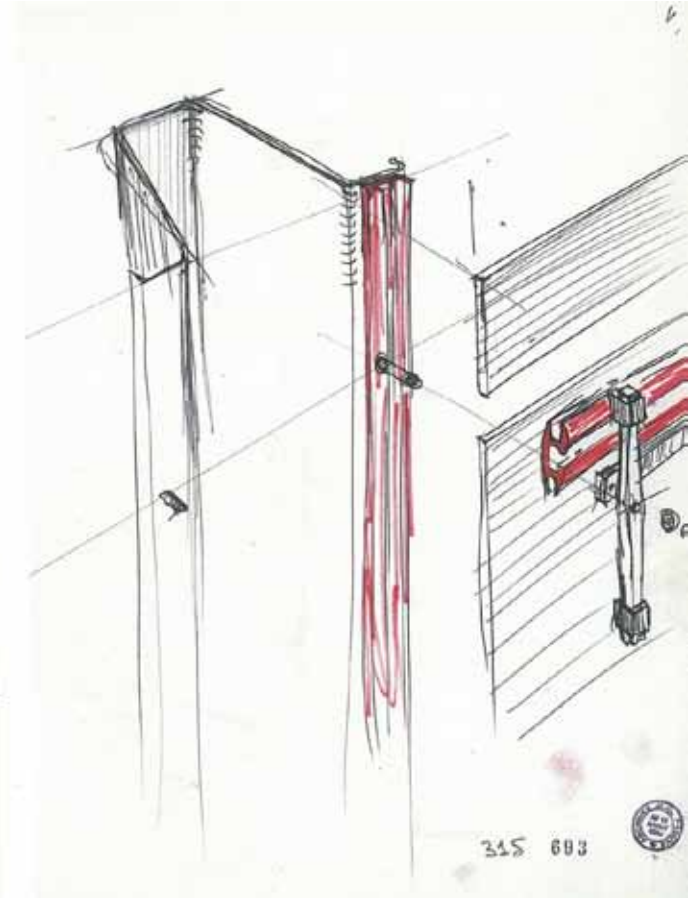
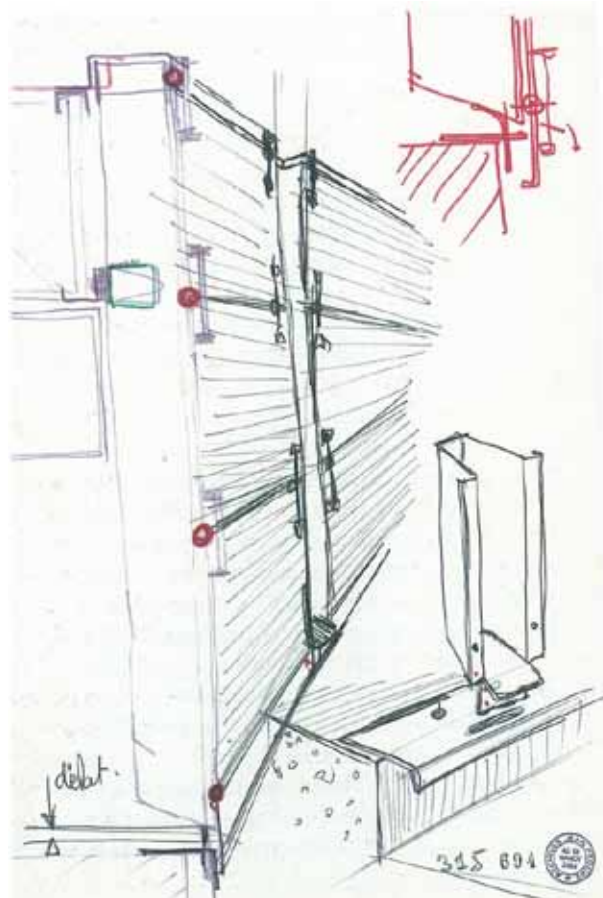
Façade courante NORD
Coupe B-B
Ech. 1/20

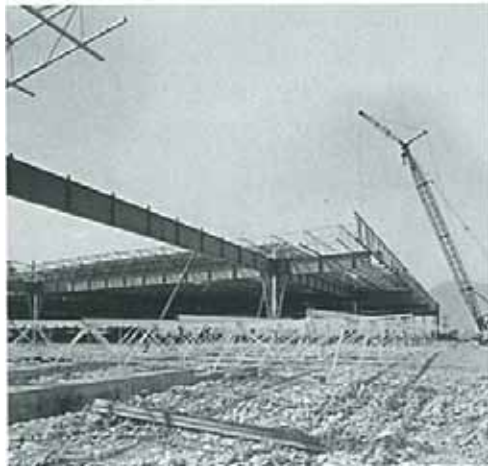
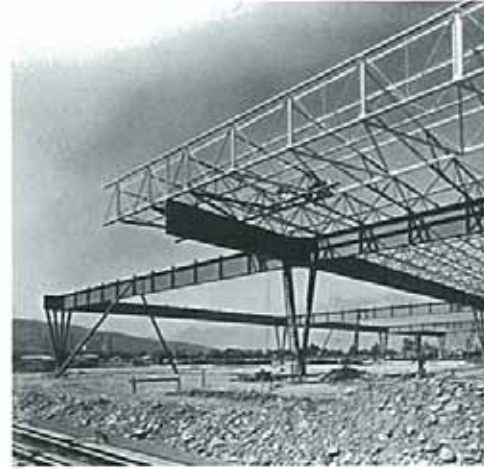
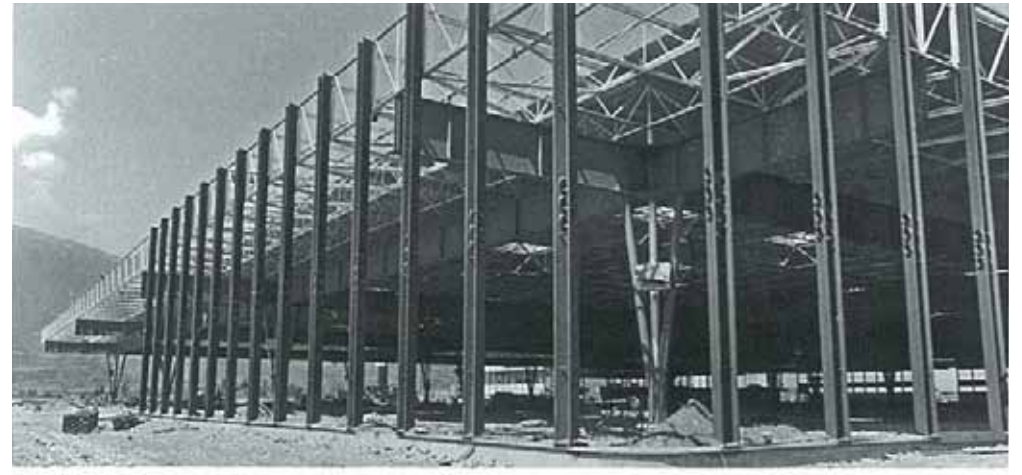
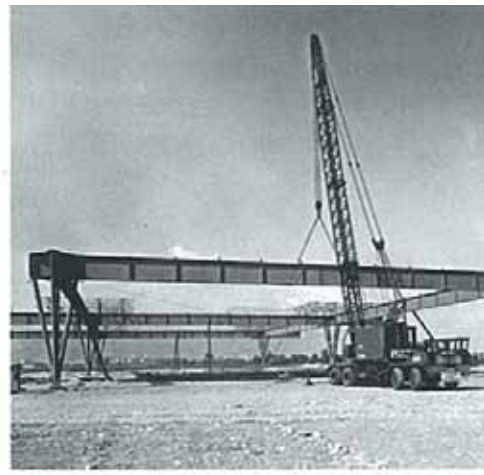


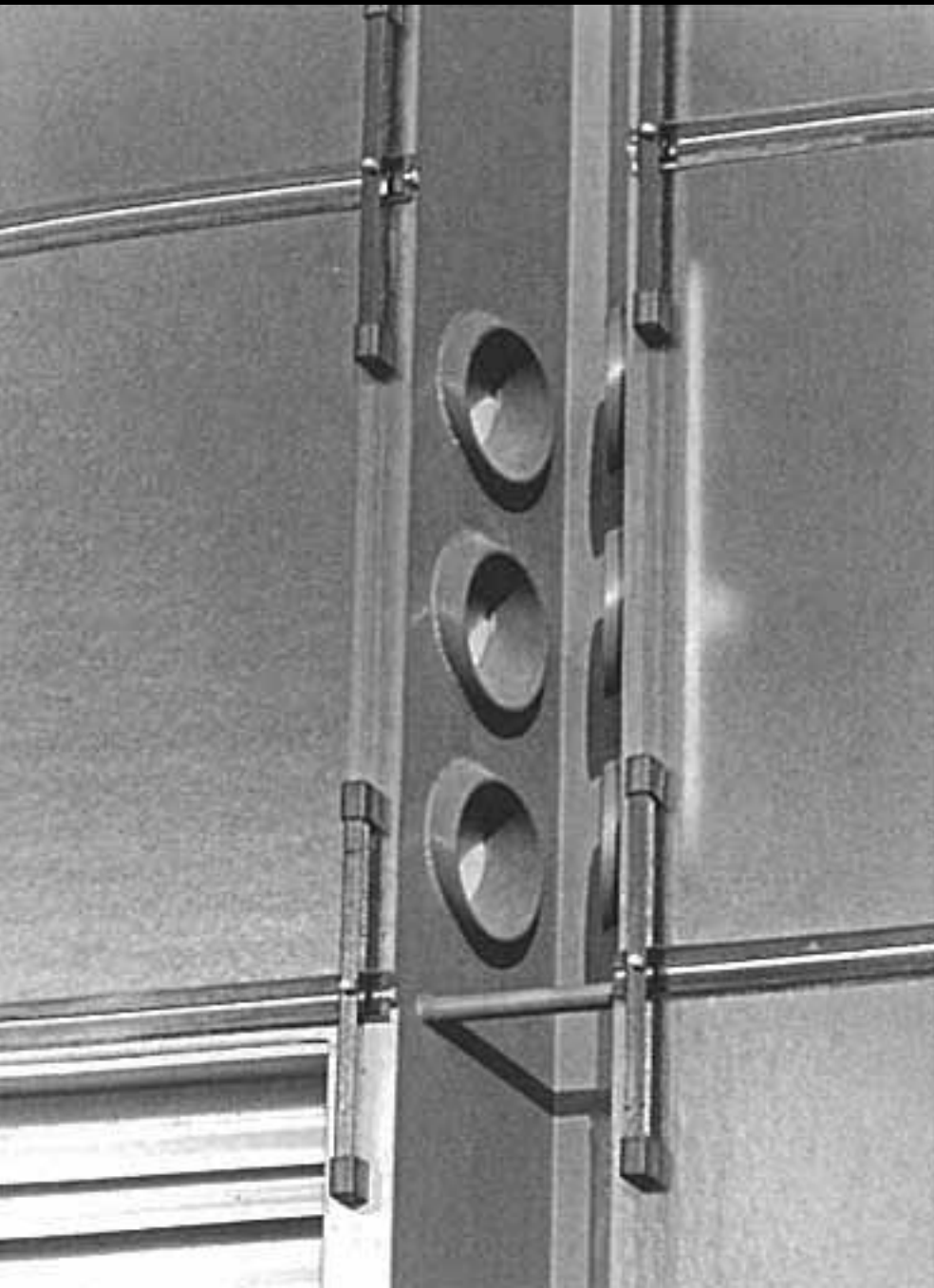
Façade courante NORD
Elevation partielle
Ech. 1/20



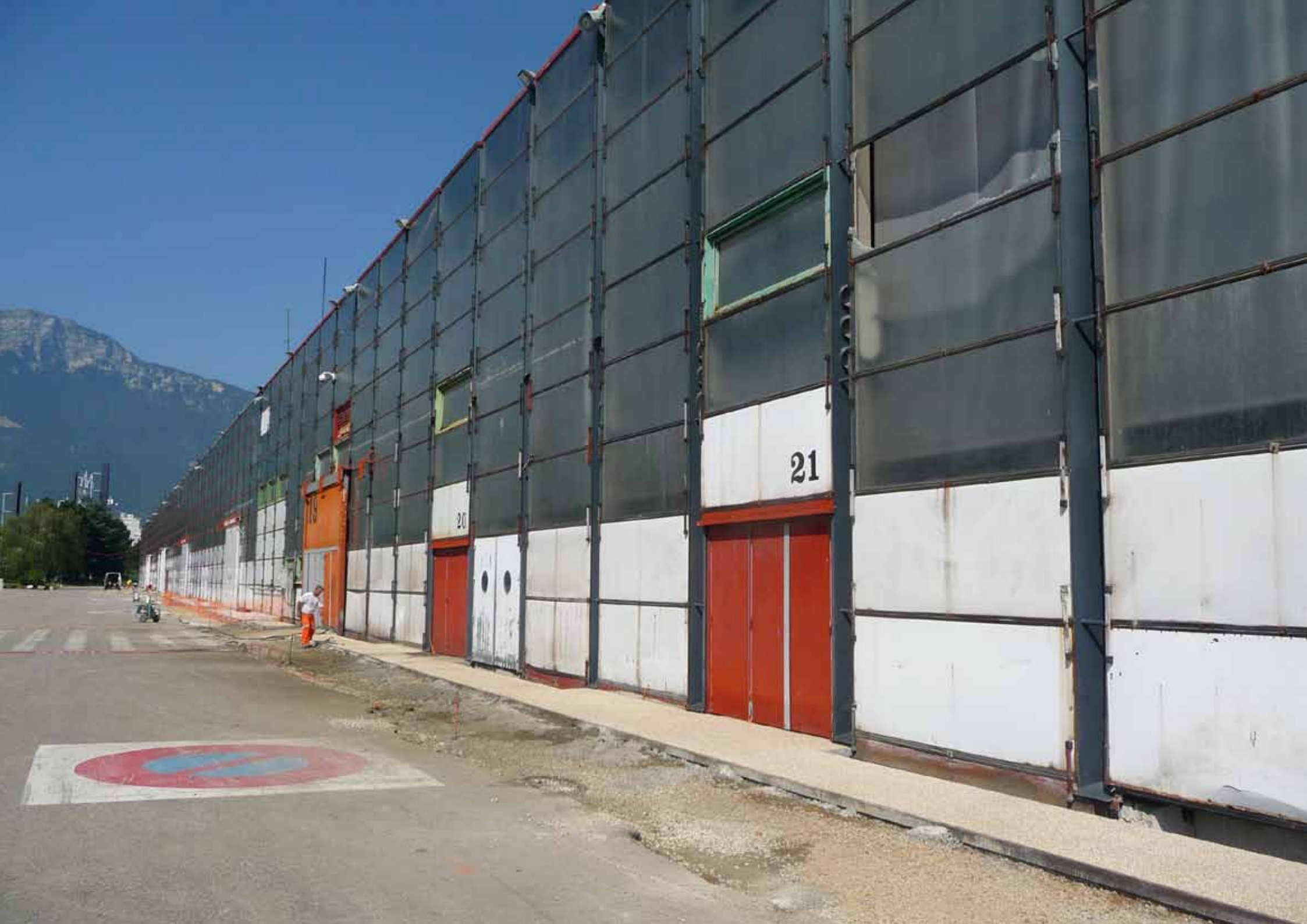
Façade courante MARANDJIAN
Coupe A-A
Ech. 1/20











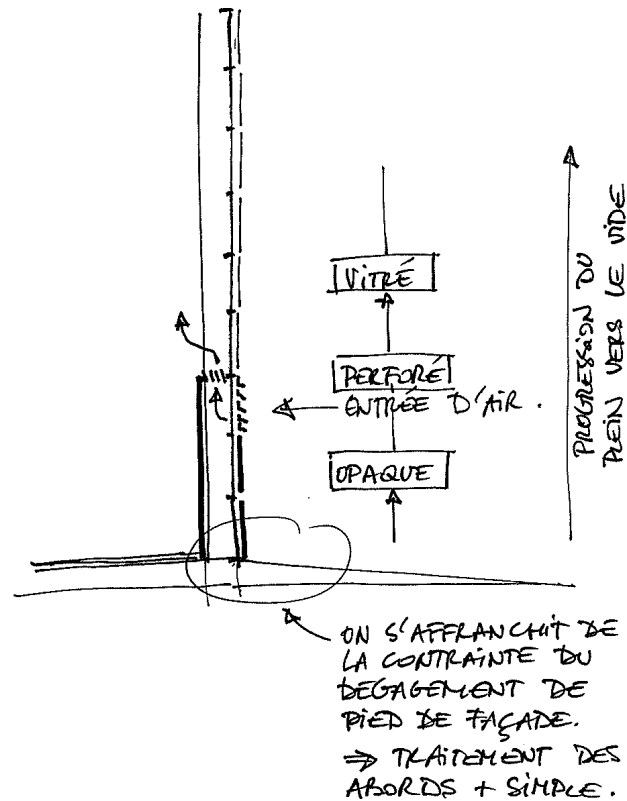
21

20

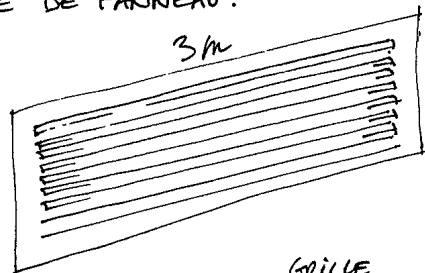
19

26.01.2009

PRINCIPE DE VENTILATION DU HALL MARANDJIAN PAR ENTRÉE D'AIR DANS UN PANNEAU DE FAÇADE -



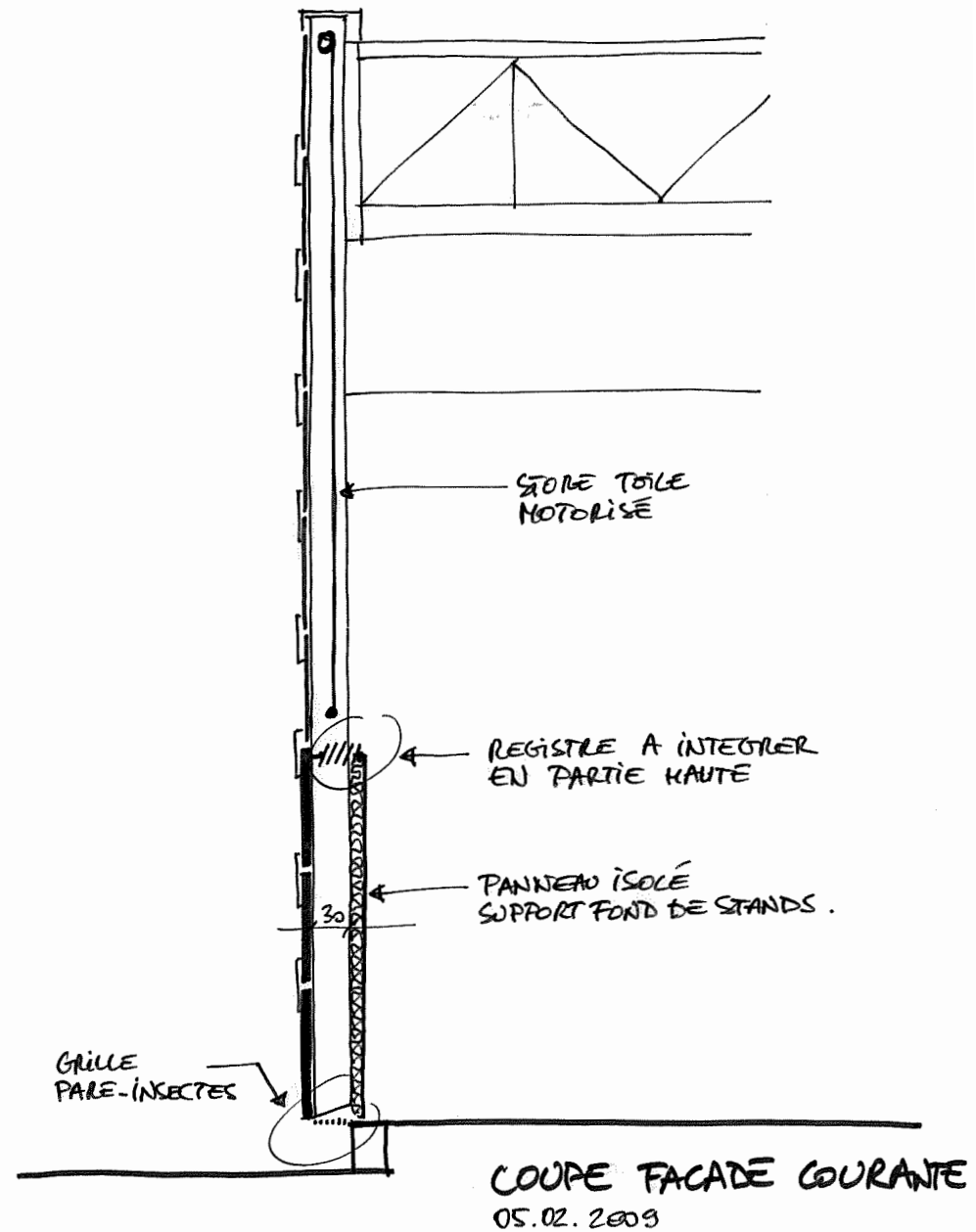
TYPE DE PANNEAU :

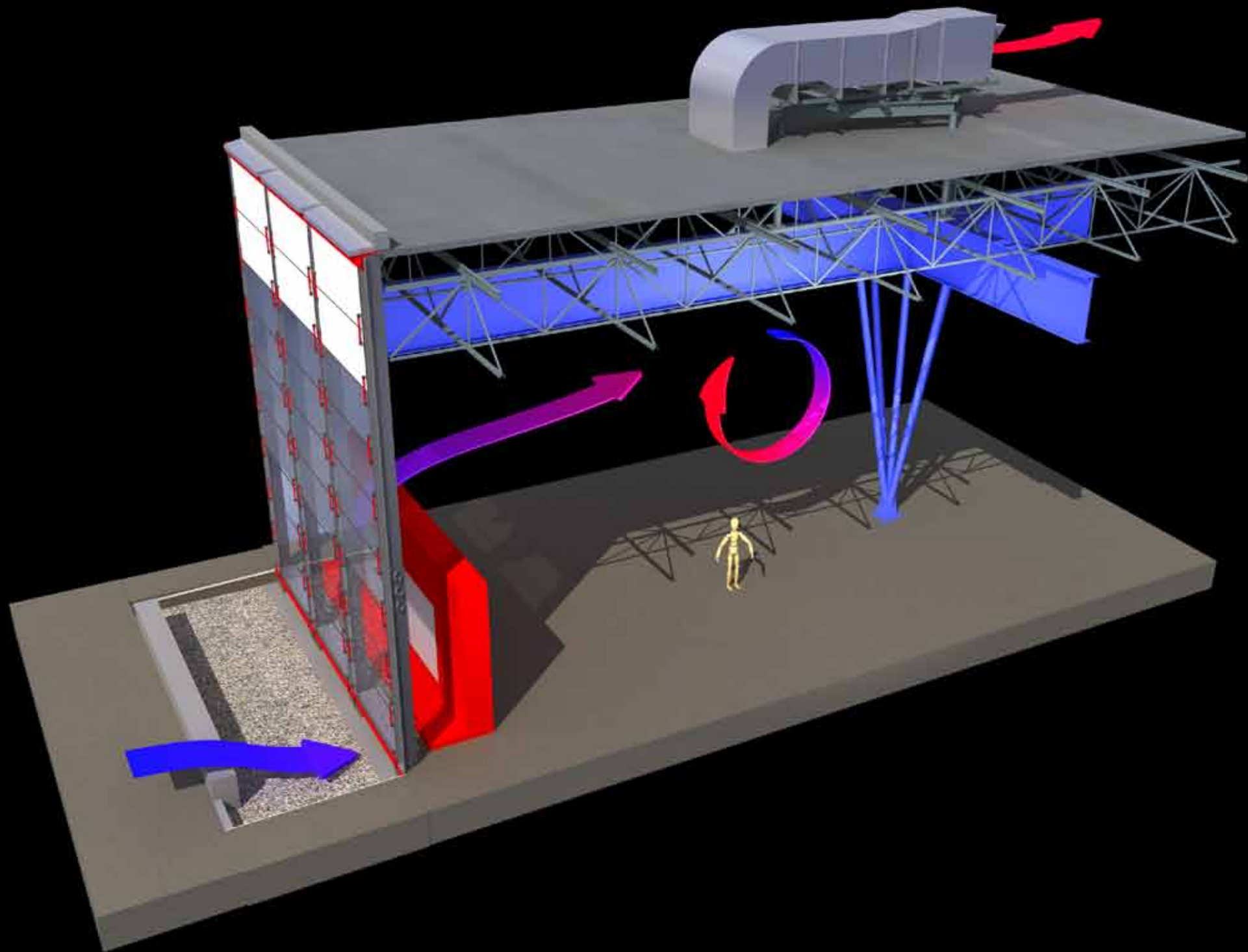


GRILLE
PARE
INSECTES
(COEFF. 0,65)

PANNEAU METALLIQUE
(ALU ?) INTEGRANT
DES FENTES ENBOÛTIES
AVEC FORME DE AUVENT
(PROTECTION PLUIE) -

COEFF. PERFORATION :
ENV. 25 à 30 % .







26

27





ALPEXPO

36

37

38

39

40

41

